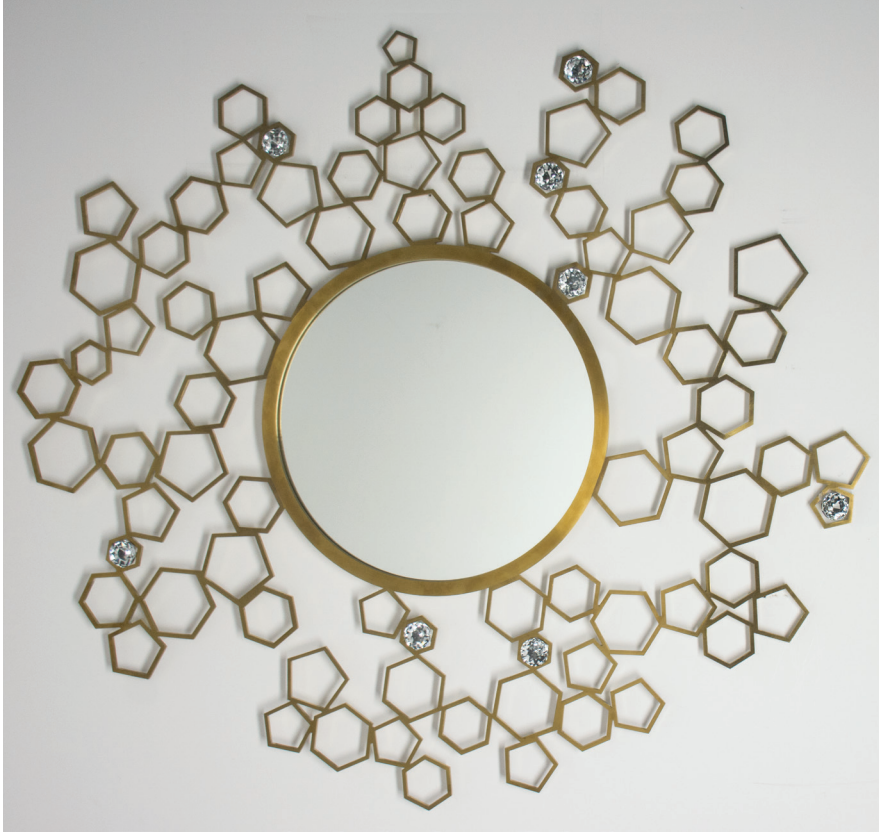
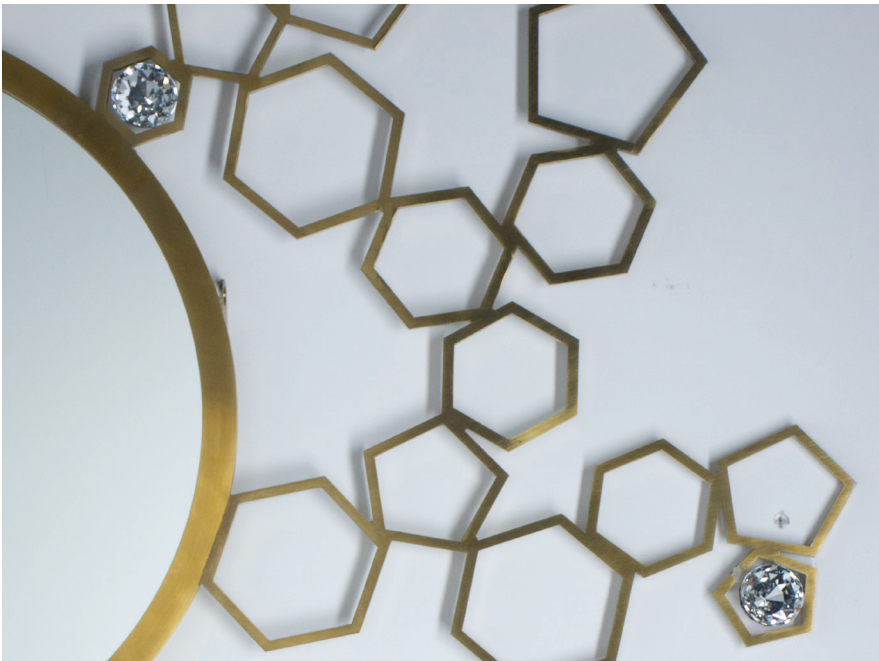


Lemoine Mirror

A round mirror set in a simple brass plated stainless steel frame surrounded by a lattice of pentagons with an optional splash of extra glamour with a few inset crystals.



DETAIL IMAGE



MIRROR SPECS

- Outer mirror dimension: 48"W x 46"H
- Inner frame dimension: 1"W x 1"D
- Gold finish on stainless steel frame.
- Features Swarovski crystals embossed on octagon-shaped metal accents.
- 3/16" hospitality grade mirror with polished edge.

TRUSTED MANUFACTURING

- Model room lead time: 4 to 6 weeks
- Full order lead time: 10 to 12 weeks
- Flexible shipping
- Dependable delivery

ENTIRELY CUSTOMIZABLE

- Infinite dimensions and sizes suited for every project.
- Optional add-ons and customizations to make your mirror unique.

MunnWorks

Extraordinary Mirrors

MunnWorks is a world-class manufacturer of decorative framed and lighted mirrors for the global hospitality industry. Our goal is to contribute to the creation of groundbreaking designs by providing quality and eco-friendly manufacturing of our decorative framed and lighted mirrors while ensuring that every project is completed on time and within budget.

150 N. Macquesten Parkway
Mount Vernon, NY 10550
914.665.6100
hello@munnworks.com
www.munnworks.com